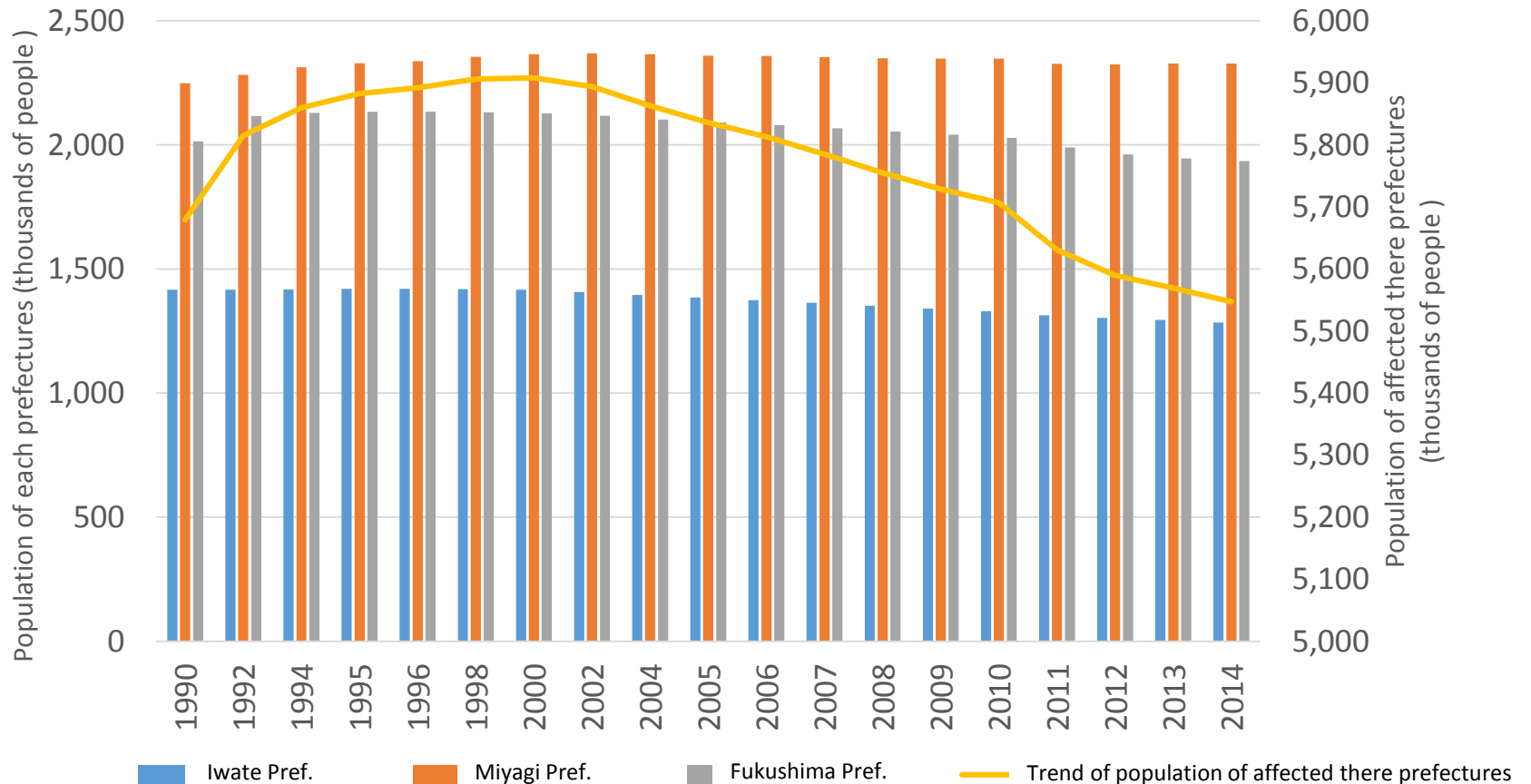


Economic and Social Situations in the Three Disaster-Stricken Prefectures: Population Trends in Each Prefecture



Note: The original data of this figure is taken from the Cabinet Office, “The 2012 Population Census of Japan” and “Current Population Estimates” (This revised figure is based on the materials of original data after 2012)

Source: The Ministry of Internal Affairs and Communications, “Annual Report on the Japanese Economy and Public Finance, 2012”

Detailed Information of the figure on the previous page

Title on the previous page		Economic and Social Situations in the Three Disaster-Stricken Prefectures: Population Trends in Each Prefecture
Point of displayed contents		The population has had a tendency to decline in recent years, but increases have been observed since the disaster.
Details of the source	Name of the source	Cabinet Office, "Annual Report on the Japanese Economy and Public Finance, 2012", Figure 2-3-3 (1) of Chapter 2, section 3 1 <July, 2012>
	Title	Economic and Social Situations in Three Disaster-Stricken Prefectures: Population Trends in Each Prefecture
	URL	http://www5.cao.go.jp/keizai3/2012/0727wp-keizai/summary.html
Details of the original data	Name of the original data 1	Ministry of Internal Affairs and Communications, "The 2012 Population Census of Japan" (in Japanese)
	Title	Ref : E-stat "Statistical Database by Area"
	URL	http://www.e-stat.go.jp/SG1/chiiki/Welcome.do
	Name of the original data 2	Ministry of Internal Affairs and Communications, "Current Population Estimates" (in Japanese)
	Title	Figure 5 Population by Sex for Prefectures - Total population, Japanese population, October 1, Each Year
	URL	http://www.stat.go.jp/data/jinsui/2014np/pdf/gaiyou3.pdf
Keywords		Trends in population, Iwate prefecture, Miyagi prefecture, Fukushima prefecture, Economic society