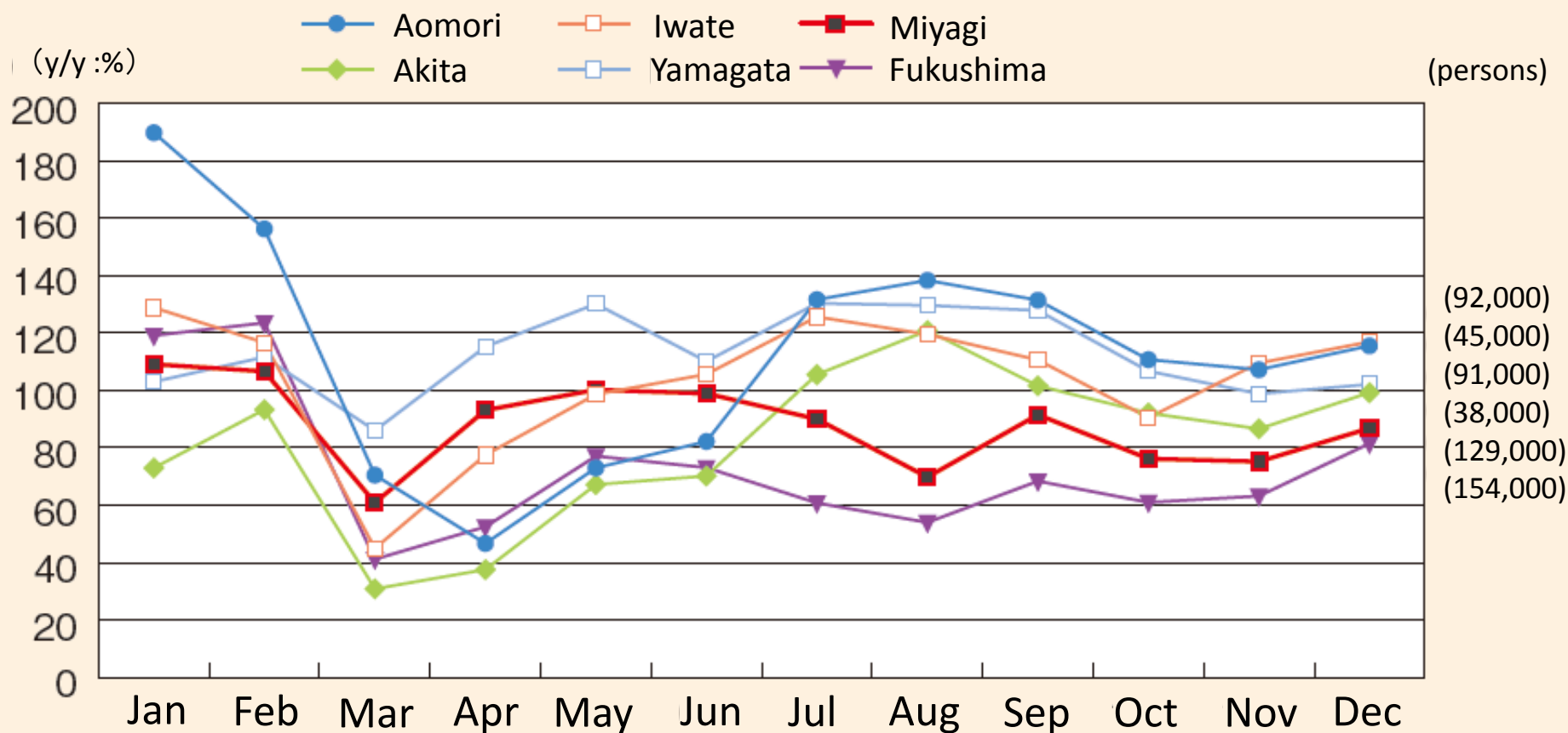


Changes in total number of overnight guests (mainly for sightseeing purposes) in each prefectures of Tohoku (2011 /2010)



Note: This covers facilities with 10 or more employee where more than 50% of the guests have come for sightseeing.

Note: The original data of this chart is provided by the Japan Tourism Agency “Statistical Survey of Overnight Trips”

Source: This revised is based on the Ministry of Land, Infrastructure, Transport and Tourism (MLIT) “WHITE PAPER ON LAND, INFRASTRUCTURE AND TRANSPORT IN JAPAN, 2011”

Detailed Information of the figure on the previous page

Title on the previous page		Changes in total number of overnight guests (mainly for sightseeing purposes) in each prefectures of Tohoku (2011 /2010)
Point of displayed contents		<ul style="list-style-type: none"> ▪ In Fukushima Prefecture, the number of overnight guests decreased about 60 % of on a year-to-year basis in March, 2011, and had continued to decrease by about 20% on a year-to-year basis in December, 2011. ▪ The approximate number of lodgers in Miyagi prefecture also continues to decrease .
Details of the source	Name of the source	Ministry of Land, Infrastructure, Transport and Tourism “ WHITE PAPER ON LAND, INFRASTRUCTURE AND TRANSPORT IN JAPAN, 2011 ” Chart 21 of Chapter 1 Section 1 1 1 <August 2011>
	Title	Changes in total number of overnight guests (mainly for sightseeing purposes)in each prefectures of Tohoku (2011 /2010)
	URL	http://www.mlit.go.jp/english/white-paper/2011.pdf
Details of the original data	Name of the original data 1	Japan Tourism Agency “Statistical Survey of Overnight Trips” from January to December 2011 (Fixed Annual) <June, 2011> (in Japanese)
	Title	Figure 9. “Year, Month (12 Classification and quarter), Location of Facility (47 Classification and such as District Transport Bureau), Ratio of Purpose for Accommodation, and Total Number of Lodgers in Domicile (2 Classification) ”
	URL	http://www.mlit.go.jp/kankocho/siryou/toukei/shukuhakutoukei.html
Keywords		Number of Lodgers, Sightseeing