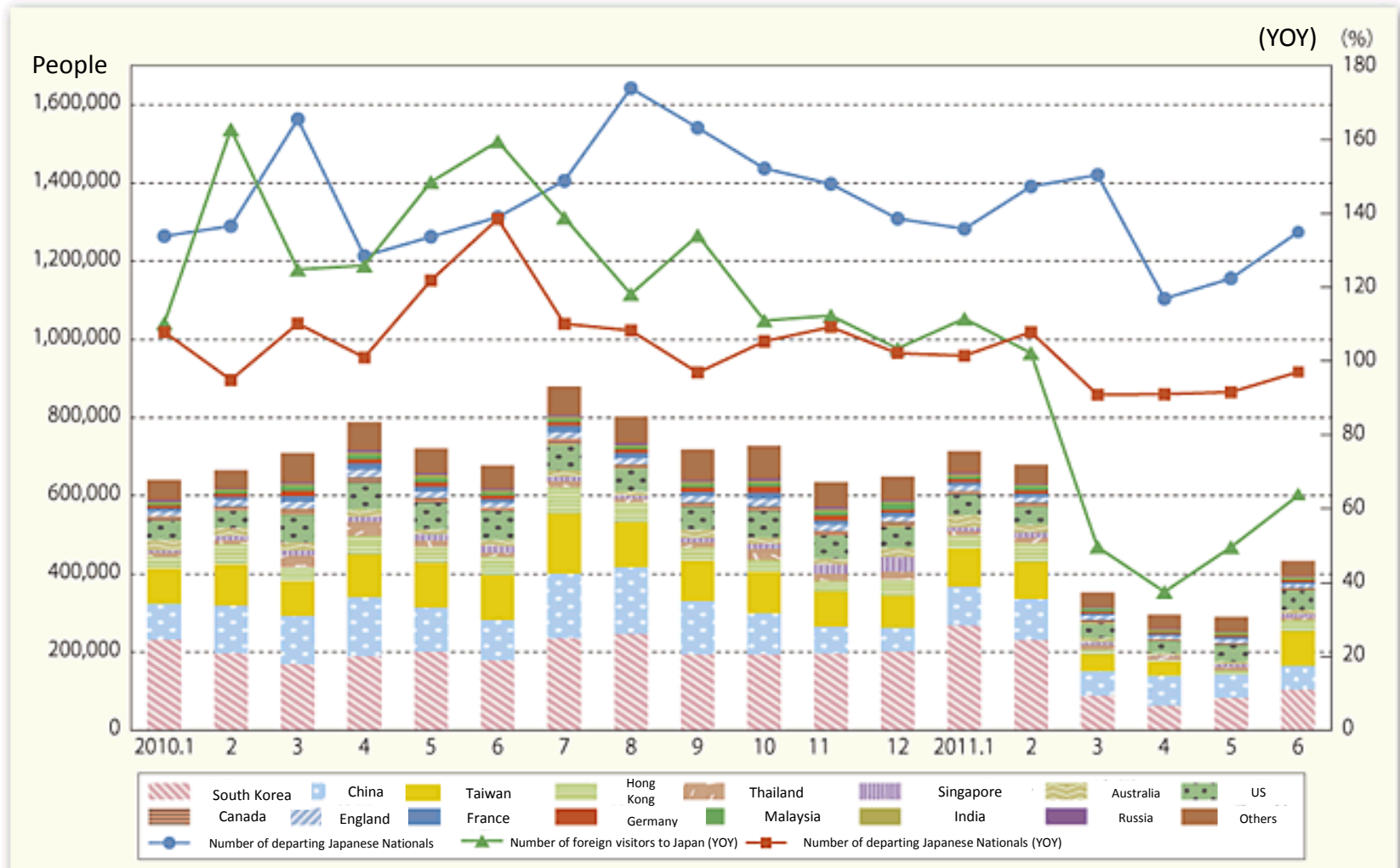


Trends in Number of Foreign Visitors to Japan and Japanese Departures Before and After the Great East Japan Earthquake



Note: The original data of this figure is taken from the materials of the Japan Tourism Organization.

Source: The Ministry of Land, Infrastructure, Transport and Tourism (MLIT) "White Paper on Land, Infrastructure, and Transport in Japan, 2010"

Detailed Information of the figure on the previous page

Title on the previous page		Trends in the Number of Foreign Visitors to Japan and Japanese Departures Before and After the Great East Japan Earthquake
Point of displayed contents		<ul style="list-style-type: none"> • There was a trend toward foreign visitors cancelling their trips to Japan and toward Japanese engaging in voluntary restraint toward travel. • The number of foreign visitors to Japan in March and April 2011 declined by approximately 360,000 (down 50% YOY) and approximately 490,000 (down 63% YOY), respectively.
Details of the source	Name of the source	The Ministry of Land, Infrastructure, Transport and Tourism, “White Paper on Land, Infrastructure and Transport in Japan, 2010”, Figure 47 of Part 1, Chapter 1, Section2 <August 2011>
	Title	Trends in the Number of Foreign Visitors to Japan and in Japanese Departures Before and After the Great East Japan Earthquake
	URL	http://www.mlit.go.jp/english/white-paper/2010.pdf
Details of the original data	Note	“Number of foreign visitors to Japan by nationality and month” made by the Japan Tourism Organization, which is the original data of the number of foreign visitors to Japan, is consistently added and updated. The name of the original data in this detailed information is as of November 2015.
	Name of the original data 1	As for the data of the number of foreign visitors to Japan are provided by Japan Tourism Organization, “Foreign Visitors and Japanese Departures (2003–2015)” < 2015 >. (in Japanese)
	Title	“Foreign Visitors and Japanese Departures, 2010 (in total)” and “Foreign Visitors and Japanese Departures, 2011”
	URL	http://www.jnto.go.jp/jpn/reference/tourism_data/pdf/2013_15_tourists.pdf
	Name of the original data 2	The number of departing Japanese is based on Japan Tourism Organization, “Estimated Value for June 2011 and Provisional Value for June 2011,” July 14, 2011. (in Japanese)
	Title	Number of Foreign Visitors to Japan and Japanese Departures
	URL	http://www.jnto.go.jp/jpn/downloads/110714_monthly.pdf
Keywords		Airline, Narita airport, Haneda airport, Number of entries and departures