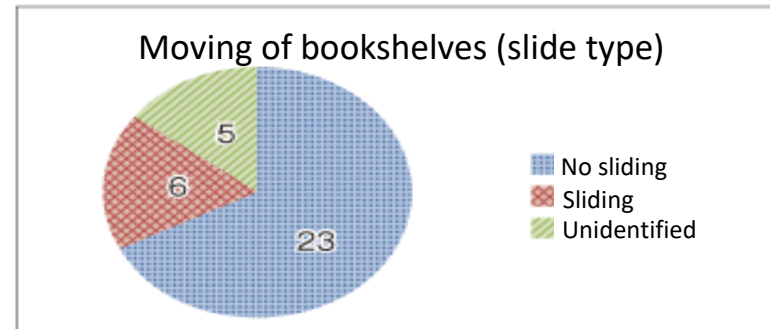
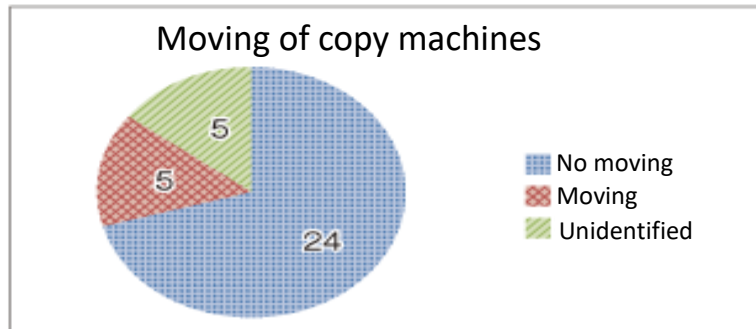
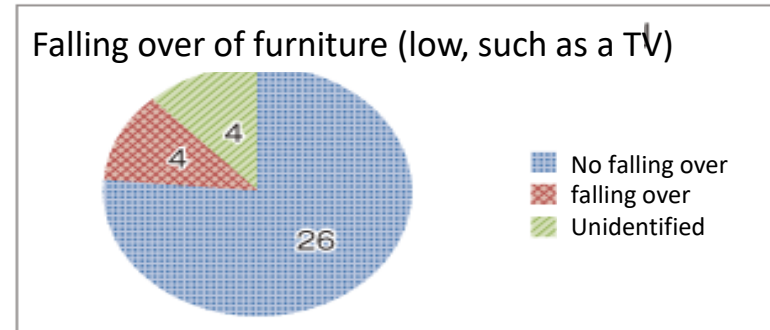
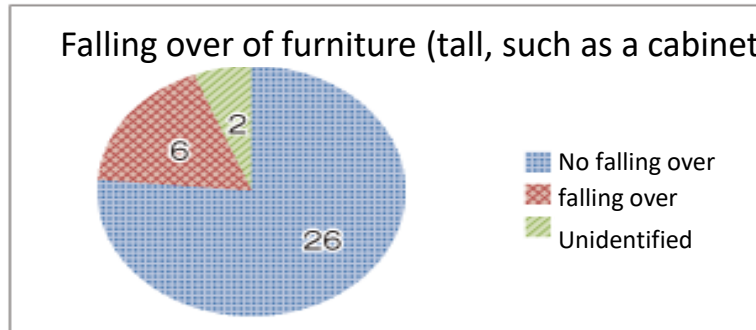
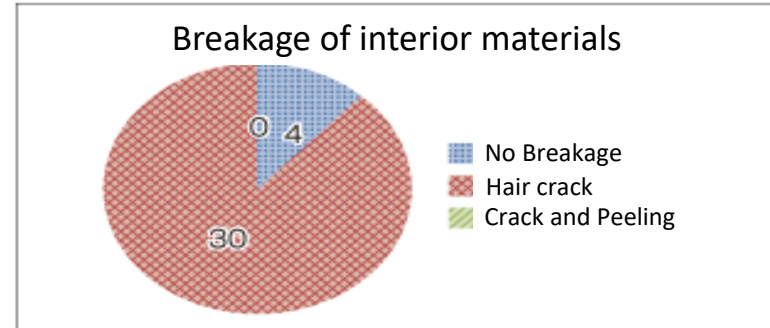
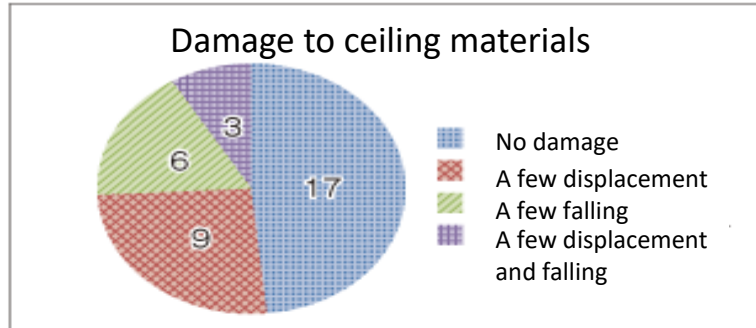


Breakage of Interior Materials, Moving and Falling Over of Furniture in High-rise Buildings

(In 34-floor high-rise buildings in Tokyo)



Original data: Meteorological Agency "Hearing Survey of Breakage of Interior Materials, Moving and Falling Over of Furniture in High-rise Buildings"
 Source: Cabinet Office "White Paper on Disaster Management 2011"

Detailed Information of the figure on the previous page

Title on the previous page		Breakage of Interior Materials, Moving and Falling Over of Furniture in High-rise Buildings
Point of displayed contents		In many high-rise buildings, minor damage to interior material (e.g. cracks), etc. occurred due to long-period earthquake motion in the aftermath of the Great East Japan Earthquake.
Details of the source	Name of the source	Cabinet Office “White Paper on Disaster Management 2011” Part 1, first edition, Chapter 1, Section1(5)<June, 2012> (in Japanese)
	Title and the number	Figure 1-1-6 Breakage of Interior Materials, Moving and Falling Over of Furniture in High-rise Buildings
	URL	http://www.bousai.go.jp/kaigirep/hakusho/pdf/H24_honbun_1-4bu.pdf
Details of the original data	Name of the original data	Meteorological Agency “Report on the Management of Information about the Long-period Earthquake Motion” (in Japanese)
	Title and the number	Hearing Survey of Breakage of Interior Materials, Moving and Falling Over of Furniture in High-rise Buildings
	URL	www.jma.go.jp/jma/press/1204/26a/siryou.pdf
Keywords		high-rise building, breakage, moving, falling over, damage
Data Number		01-041-0202 (Please specify this number when you make any inquiries about this sheet)